



HITECH CIRCUITS CO., LIMITED

Add: 5th Floor, Jinmantang Building, Liutang, Xixiang, Bao'an District Shenzhen, Guangdong Province, China
Tel: +86 755-29630063 Fax: +86 755-29970700 E-mail: sales@hitechpcb.com

Related Information of Cooperation

1, Company profile

Hitech Circuit Co., Limited, founded in 1997 in Shenzhen, adjoining to Hong Kong with easy transportation and ideal location. Now we have 10 qualified PCB manufacturers, total area is 65,000 square meters and have around 1600 experienced workers try our best to ensure the board quality and on time delivery.

Hitech focuses on high-mix, low volume and quick turn service. With a special market position and excellent corporate culture, we can provide "One-stop shop" service from 1 to 26 layers of PCB products, which includes FPC, HDI boards, heavy copper boards, buried Capacitance & resistance boards, etc. Our products cover various products are exported to Europe, America and Asia.

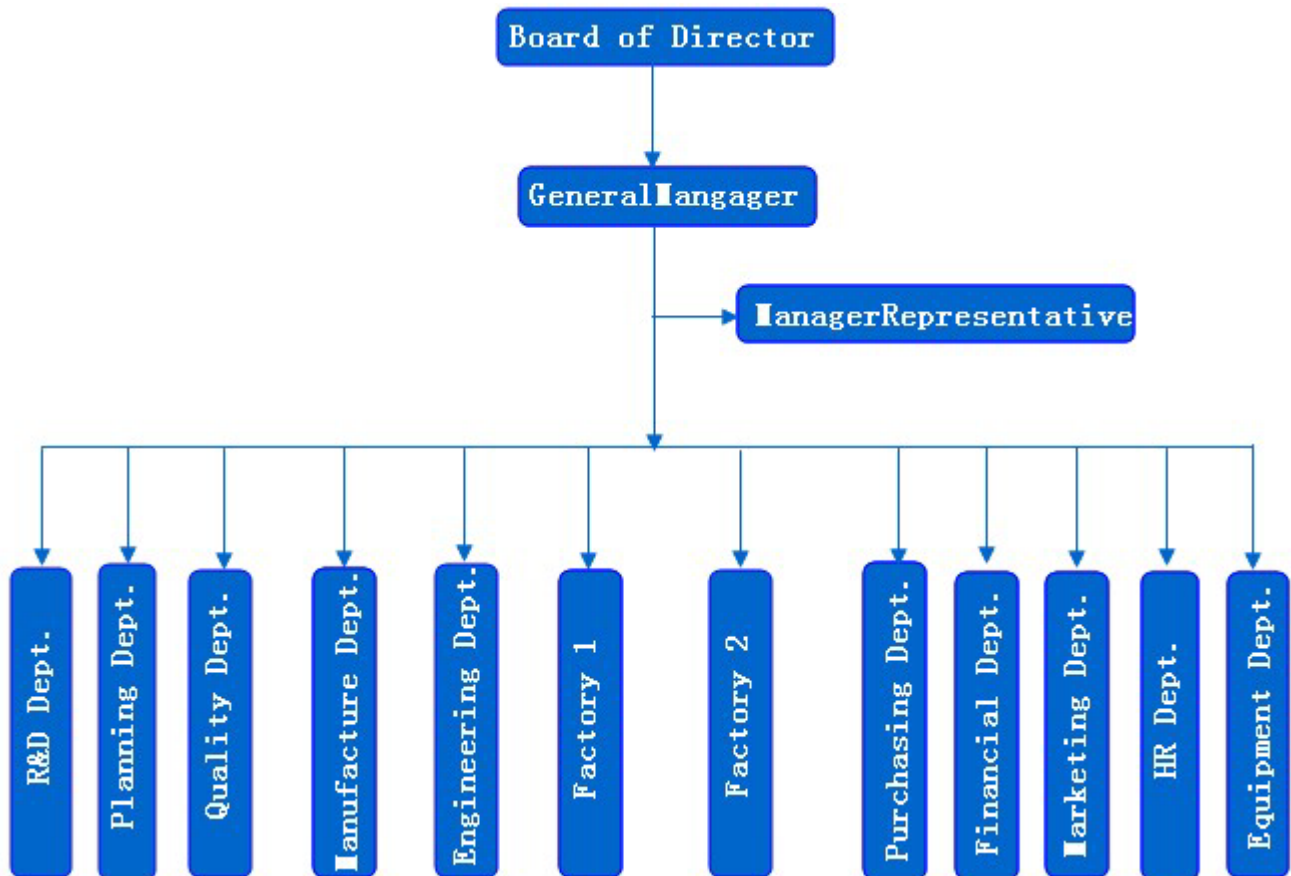
Now Hitech has formed the market development, the product research, the development, the production, the quality guarantee complete system, we focus on quality, cost, service, and experienced continuous growth and succeeded in passing the certification of international quality systems as ISO 9001, UL and ISO14001 environmental quality system.

With top quality, excellent service and competitive prices, prompt delivery are our targets to enable us to be your best partner in business. Hitech is willing to develop business relationship with customers from all over the world and we believe that Hitech will continue to grow and develop hand in hand with our valuable customers.

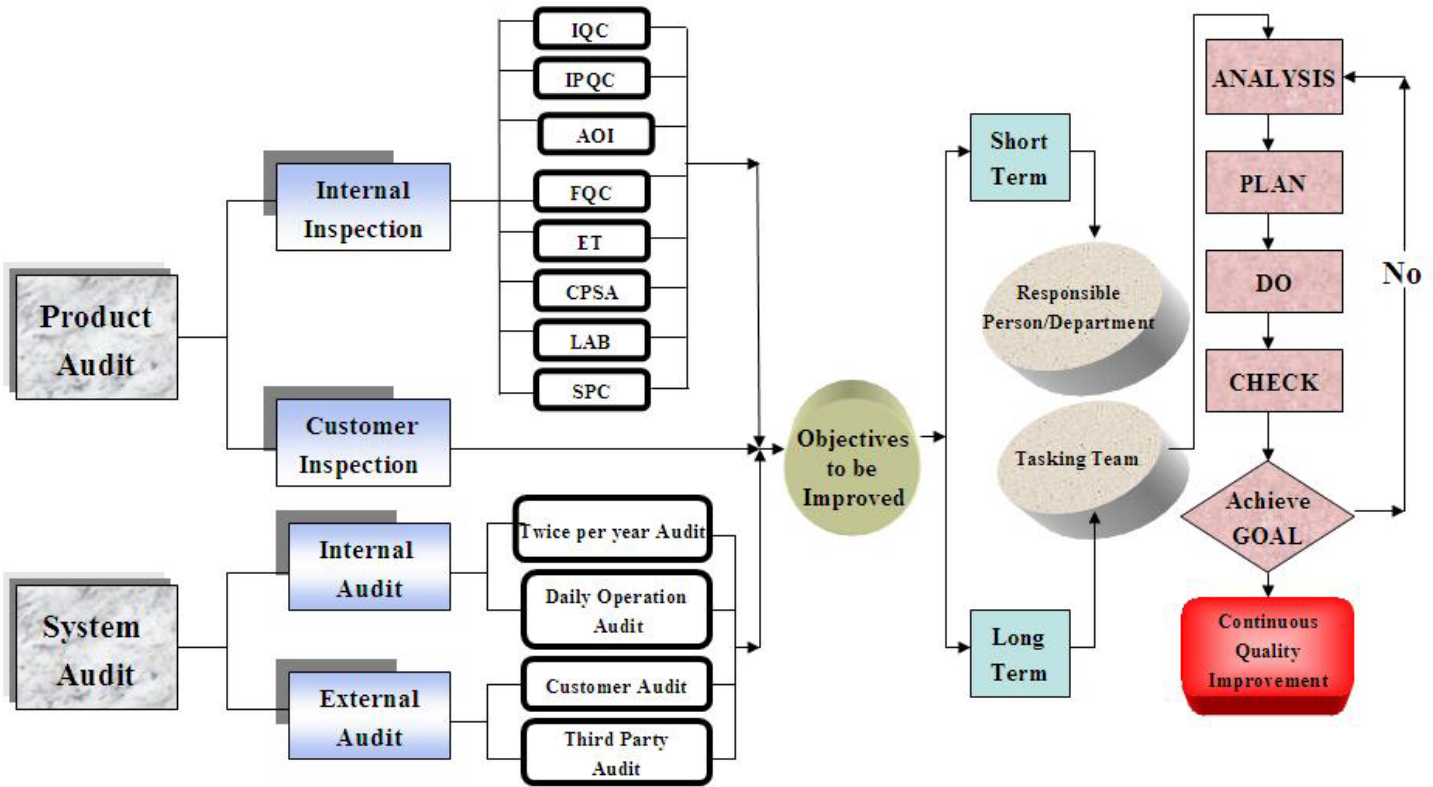
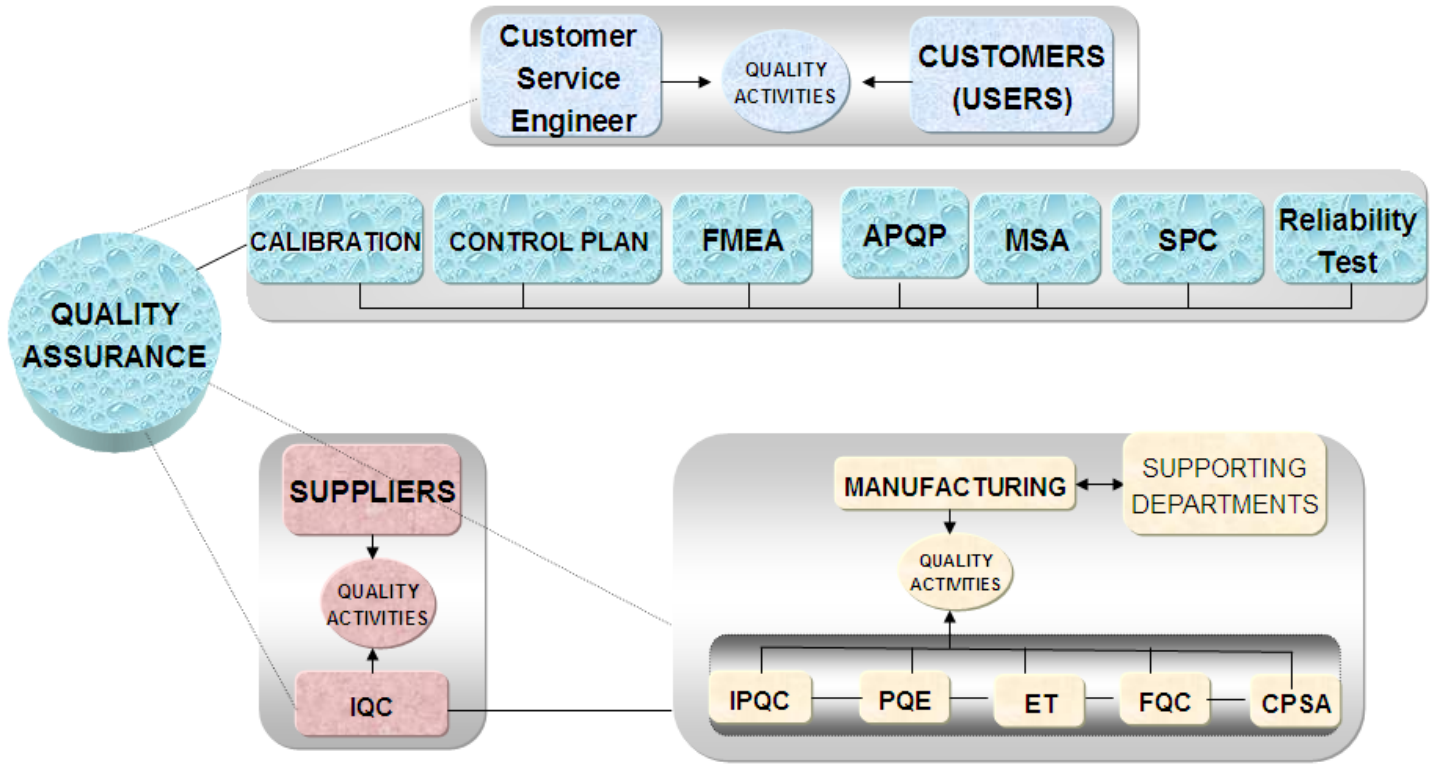
For more information, go to: www.hitechpcb.com or www.hitechcircuit.com

2, Company Structure

The reasonable organizational structure is one of our company advantage. The authority and responsibility of each department are clearly defined. Different departments are established by highlighting cooperation. All members of our management team are well experienced in PCB industry, They are professional to let everybody know what to do and how to do.



3, Quality Control System





HITECH CIRCUITS CO., LIMITED

Add: 5th Floor, Jinmantang Building, Liutang, Xixiang, Bao'an District Shenzhen, Guangdong Province, China
Tel: +86 755-29630063 Fax: +86 755-29970700 E-mail: sales@hitechpcb.com

4, Services

Rigid PCB (2 to 30 layers)
High Density Interconnection Board (HDI Board 2+N+2 Step),
Flexible PCB (1-6 Layers)

Our Website

We already work with several international companies throughout the electronics world although this doesn't mean that we are only interested in large orders. We don't have any minimum order quantities. We are committed to helping the small to mid-sized company, as well as larger companies.

We specialize in Rigid boards, High Density Interconnection boards. We have built up a large experienced workforce, ready to respond to the ever-increasing demand for high quality products in the international market place.

If you're interested in competitive pricing, excellent quality and the highest level of service, do not hesitate to contact us.

We look forward to hearing from you.

5, Production Capability:

Rigid PCB Capability

Item	Mass Production	Sample
Max. Layers	20layers	26layers
Max. Board Size	21"x24"	24"x40"
Material	FR4, High Tg, Bergquist material, PT material, etc.	Rogers, Nelco, Telfon, etc.
Max. Board Thickness	6.0mm	8.0mm
Min. Core Thickness	0.10mm	0.075mm
Min. Track Width/Space	3.5mil/3.5mil	2.5mil/2.5mil
Max. Copper Thickness	Inner Layer: 6Oz Outer Layer: 8Oz	Inner Layer: 8Oz Outer Layer: 10 Oz
Min. Drill Size	0.2mm	0.15mm
Min. Laser Drill Size	0.1mm	0.076mm
PTH Diameter Tolerance	±3mil	±2mil
Aspect Ratio	10:1	15:1
PTH Wall Thickness	18um-25um	16um-35um
Min solder mask bridge	0.13mm	0.10mm
Min solder mask window	0.10mm	0.08mm
V-cutting Tolerance	±0.13mm	±0.10mm
Outline Dimension	±0.13mm	±0.10mm
Warp and Twist	≤0.7%	≤0.5%
Plating Hard Gold	50"	200"
Controlled Impedance	±10%	±7%
HDI Board	1+N+1, 1+1+N+1+1	2+N+2, 3+N+3
Surface Treatment	HASL	HASL
Surface Treatment	HASL Lead Free	HASL Lead Free
	Immersion Gold	Immersion Gold
	Immersion Tin	Immersion Tin
	Immersion Silver	Immersion Silver
	Flash Gold	Flash Gold
	OSP	OSP
	Gold Finger	Gold Finger
	Selective hard gold	Selective hard gold

6, Raw Materials Suppliers

Normal material	Production	Prototype
Solder mask material	Taiyo or Tumura	Taiyo or Tumura
Laminate material	Shengyi (S1141, S1170)	Shengyi (S1141, S1170)
	ITEQ (IT140, IT180)	ITEQ (IT140,IT180)
	Goword (GW40,GW4011)	Goword (GW40,GW4011)
	King Board (KB-6165,/6160)	KingBoard (KB-6165,/6160)
HASL Lead Free	SN100C	SN100C
Peelable Mask	SD2955	SD2955

7, Major Equipment List

Main Equipment list (Q1 2009)

No	Equipment	Quantity	Unit	Origin of supplier
1	CNC.drilling machine	24	Set	Germany/Hitachi
2	Auto electroplate line	1	Set	HK
3	Auto PTH	1	Set	HK
4	UV machine	1	Set	Italy
5	V-cut machine	2	Set	Italy
6	Computer-control V-cutter	1	Set	Taiwan
7	Wire Repaired machine	1	Set	China
8	Test machine	10	Set	HK
9	Punching machine	2	Set	HK
10	Drilling Target machine	2	Set	HK
11	Edge Beveling cutter	1	Set	China
12	Corner Beveling Cutter	1	Set	Taiwan
13	Nickel plating line	1	Set	China
14	Film Laminator	1	Set	China
15	Squeegee sharpen	1	Set	HK
16	Photo plot	2	Set	China
17	Black Oxide	2	Set	Taiwan
18	Oven	14	Set	HK
19	Board cutter	4	Set	HK
20	Vacuum-Press machine	4	Set	Taiwan
21	Tense Screen Machine	1	Set	China
22	Cooler	4	Set	China
23	Cool Pressing	2	Set	HK
24	Routing Machine	3	Set	HK

25	Grinding Machine	5	Set	HK
26	Volcanic ASH grinding machine	2	Set	England
27	Edge Grinding Machine	3	Set	China
28	Sirocco Flattening	1	Set	China
29	Exposure	6	Set	Japan
30	Corner cutter	1	Set	Taiwan
31	Hot Pressing	2	Set	HK
32	Screen dryer	1	Set	HK
33	Etching Line	2	Set	HK
34	Semi-Auto screen Printer	6	Set	HK
35	Hand screen Printer	15	Set	China
36	projector	3	Set	china
37	Stripper	2	Set	China
38	Dust catcher	16	Set	HK
39	Milling machine	1	Set	Italy
40	Developing Machine	3	Set	HK
41	position-hole drill	3	Set	Taiwan
42	drill bits sharper	7	Set	China
43	Vacuum packer	1	Set	Taiwan
44	brown Oxidation Line	1	Set	HK
45	Auto Drilling target machine	2	Set	China

8, Our Customers





HITECH CIRCUITS CO., LIMITED

Add: 5th Floor, Jinmantang Building, Liutang, Xixiang, Bao'an District Shenzhen, Guangdong Province, China
Tel: +86 755-29630063 Fax: +86 755-29970700 E-mail: sales@hitechpcb.com

9, Future Development

Our up-to-date operation concept is our edge in surpassing other competitors. We understand the need of our clients, make precise analysis of the market and formulate feasible development plans for the projects. Last but not least, our investment in advanced technology with automatic production lines all paves the way for high efficacious future. We commit to produce high quality PCB within tight schedule with great flexibility so as to meet with the need of individual customers.

Hitech Bank Information:

- 1. Beneficiary's Company Name:** HITECH CIRCUITS CO., LIMITED
- 2. Beneficiary's Company Address:** 5th Floor, Jinmantang Building, Liutang, Xixiang, Bao'an District, Shenzhen, Guangdong, China
- 3. Bank Name:** Shanghai Pudong Development Bank
- 4. Bank Address:** No.12, Zhongshan Dong Yi Road, Shanghai, China
- 5. Bank A/C No.:** OSA11443631107422 (USD)
OSA13843630621941 (EUR)
- 6. Swift Code:** SPDBCNSHOSA